

New Product Information

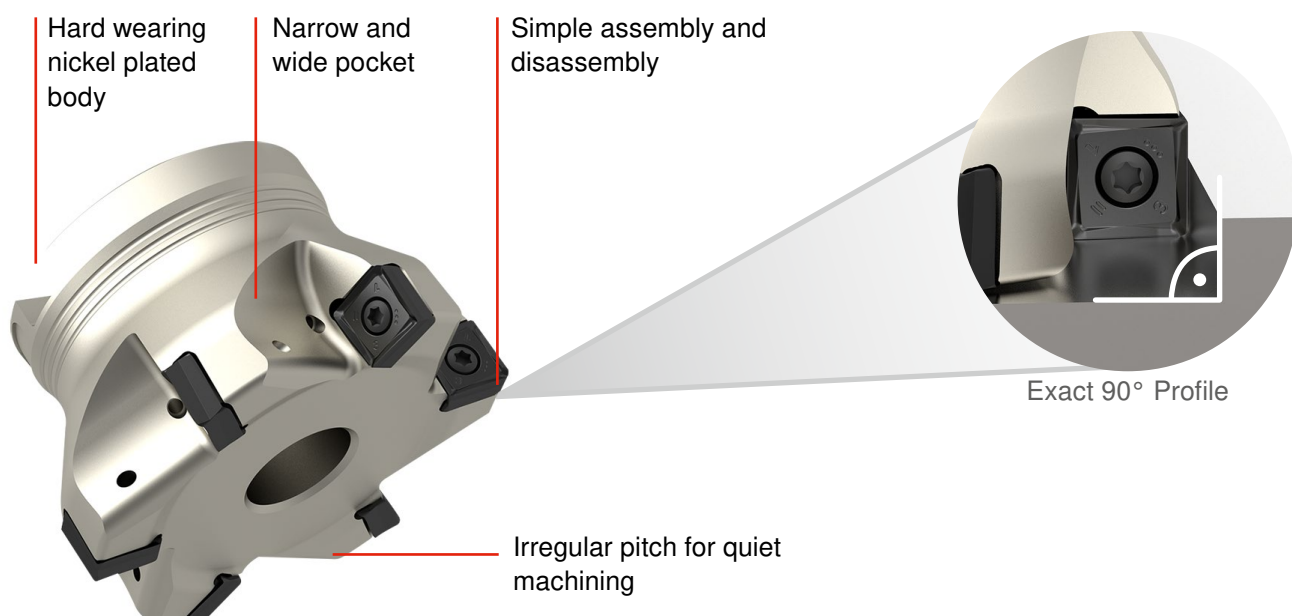
MaxiMill 491 – programme extension – new insert size 09

CERATIZIT \ Performance

2018-10

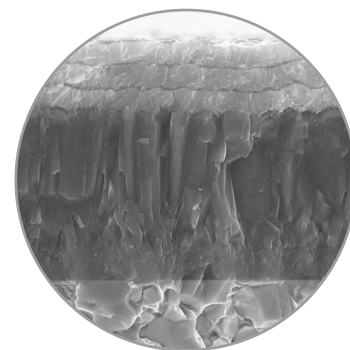
Following the extremely successful launch of our MaxiMill 491 shoulder milling system with size 12 indexable insert, we have responded to popular demand by adding the new size 09 indexable insert for less powerful machines to the range for our 90° double-sided milling systems. It goes without saying that all the benefits of the size 12 indexable insert will also apply to the new size 09 indexable insert.

MaxiMill 491-09

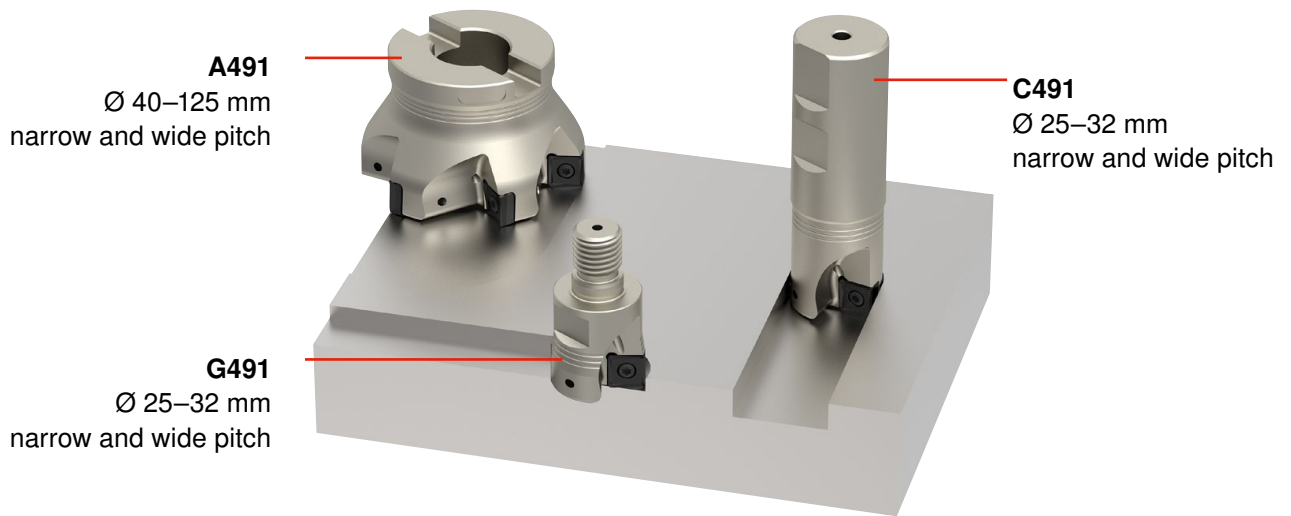


Customer benefits

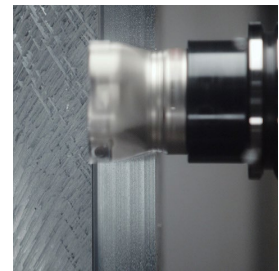
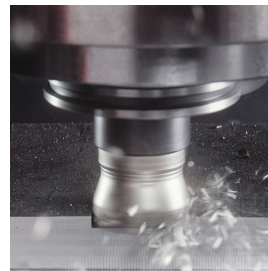
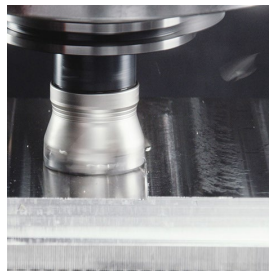
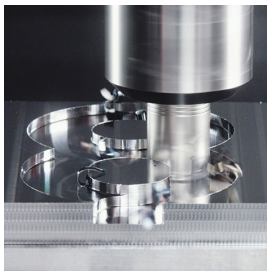
- Wide range of indexable inserts with Masterfinish geometry
- Ideal for less powerful machines.
- Extremely cost-effective with **8 usable cutting edges**, up to maximum **6 mm width of cut**
- The very best surface quality thanks to soft cutting capability of the **positive insert geometries**
- Reduced wear on indexable inserts due to the **soft cutting capability**, resulting in significantly longer service life
- **Precise 90°** – no rework required
- Quick and easy indexable insert changing means shorter machine downtimes
- **Precision-ground indexable insert** for total face and radial run-out accuracy



Range overview MaxiMill 491-09

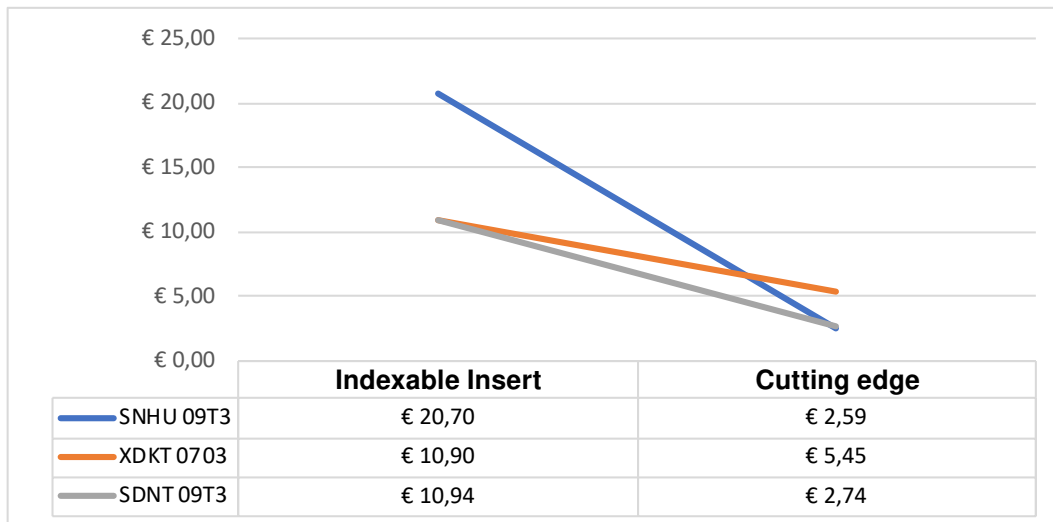


Grade and chip breakers overview



| | | | | |
|-------------|--------------------|--------------|----------------------|---------|
| Type | CTCP230 CTPP235 | CTPM240 | CTCK215 [CTWN215] | CTWN215 |
| Chip groove | -M50 | -F50 -M50 | -R50 [-F10] | -F10 |

Price/cutting edge comparison



Sales support

- See the E-techstore for prices and availability

Success stories

Customer trial in Germany:

Material:

16 MN Cr 5

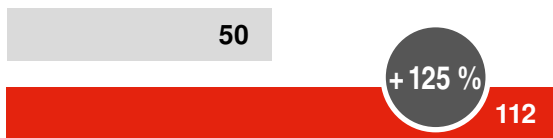
Indexable insert:

SNHU 09T308SR-M50 CTCP230

Tool:

G491.32.R.04-09

Tool life in m



| Cutting data | CERATIZIT | Competitor |
|----------------|-----------|------------|
| v_c in m/min | 250 | 250 |
| f_z in mm | 0,16 | 0,16 |
| a_p in mm | 2 | 2 |
| a_e in mm | 16–20 | 16–20 |
| Coolant | Emulsion | Emulsion |
| Tool life in m | 112 | 50 |

Customer trial in Spain:

Material:

GJV-500

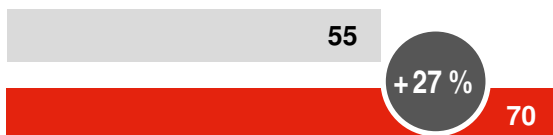
Indexable insert:

SNHU 09T308SR-R50 CTCK215

Tool:

A491.40.R.05-09

Components



| Cutting data | CERATIZIT | Competitor |
|----------------|-----------|------------|
| v_c in m/min | 220 | 220 |
| f_z in mm | 0,08 | 0,1 |
| a_p in mm | 2,5 | 2,5 |
| a_e in mm | 21 | 21 |
| Coolant | - | - |
| Components | 70 | 55 |